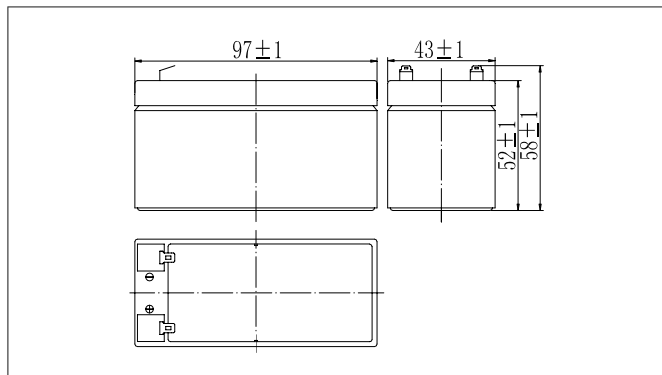


**BLACK  
BATT.」  
KURU TIP AKÜLER**

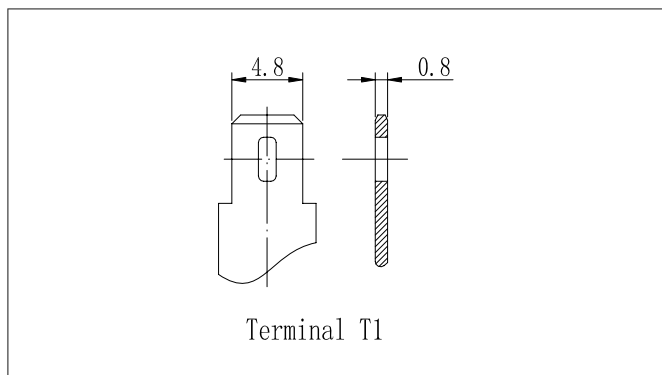
## SPECIFICATIONS

Model	BB 1.3-12	
Nominal Voltage	12V	
Rated capacity (20 hour rate)	1.3Ah	
Dimensions	Length	97± 1mm(3.82inch)
	Width	43± 1mm(1.69inch)
	Height	52± 1mm(2.05inch)
	Total Height	58± 1mm(2.28inch)
Approx. Weight	0.52kg(1.15lbs)± 5%	

## OUTER DIEMENSIONS (MM)



## TERMINAL TYPE (MM)



BB12V - 1.3AH

# BLACK BATT.

## CHARACTERISTICS

Capacity (25 °C)	20HR(10.5V)	1.3Ah
	10HR(10.5V)	1.12Ah
	1HR(9.60V)	0.78Ah
Terminal type		T1
Internal resistance (Fully charged,25 °C)		Approx.90m Ω
Capacity affected by temperature (20HR)	40 °C	102%
	25 °C	100%
	0 °C	85%
	-15 °C	65%
Self-discharge (25 °C)	3 months	Remaining Capacity:91%
	6 months	Remaining Capacity:82%
	12 months	Remaining Capacity:65%
Nominal operating temperature		25°C± 3°C(77°F± 5°F)
Operating temperature range	Discharge	-15°C~50°C(5°F~122°F)
	Charge	-10°C~50°C(14°F~122°F)
	Storage	-20°C~50°C(-4°F~122°F)
Float charging voltage(25°C)		13.60 to 13.80V Temperature compensation: -18mV/°C
Cyclic charging voltage(25°C)		14.50 to 14.90V Temperature compensation: -30mV/°C
Maximum charging current		0.36A
Terminal material		Copper
Maximum discharge current		18A(5 sec.)
Designed floating life(20°C)		5 years

## CONSTANT CURRENT DISCHARGE CHARACTERISTICS UNIT: A (25°C)

F.V/Time	5min	10min	15min	30min	60min	2h	3h	4h	5h	10h	20h
9.60V	4.56	2.88	2.28	1.27	0.78	0.43	0.306	0.245	0.208	0.113	0.061
9.90V	4.42	2.79	2.23	1.25	0.77	0.42	0.304	0.243	0.207	0.113	0.061
10.2V	4.24	2.68	2.14	1.21	0.75	0.42	0.302	0.242	0.205	0.112	0.060
10.5V	4.06	2.56	2.07	1.18	0.73	0.41	0.300	0.240	0.204	0.112	0.060
10.8V	3.83	2.42	1.96	1.14	0.71	0.40	0.291	0.233	0.198	0.109	0.059

## CONSTANT POWER DISCHARGE CHARACTERISTICS UNIT: W (25°C)

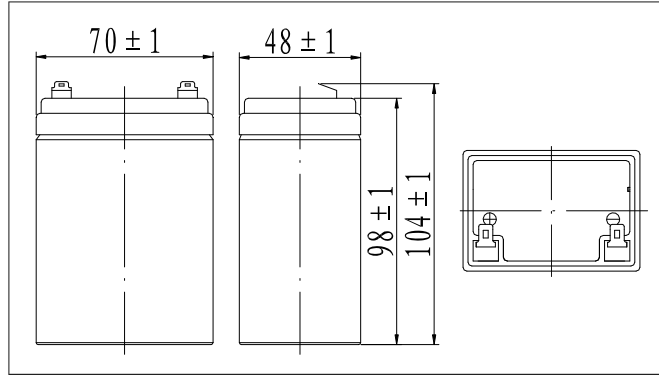
F.V/Time	5min	10min	15min	30min	60min	2h	3h	4h	5h	10h	20h
9.60V	50.9	32.5	26.0	14.6	9.0	4.99	3.64	2.92	2.48	1.36	0.73
9.90V	49.4	31.5	25.4	14.3	8.9	4.96	3.61	2.90	2.47	1.35	0.73
10.2V	47.3	30.2	24.4	13.8	8.7	4.91	3.59	2.88	2.45	1.35	0.72
10.5V	45.3	28.9	23.6	13.5	8.5	4.84	3.56	2.86	2.44	1.34	0.72
10.8V	42.7	27.3	22.4	13.0	8.2	4.72	3.46	2.77	2.36	1.31	0.71

**Note:** The above characteristics data can be obtained within three charge/discharge cycles

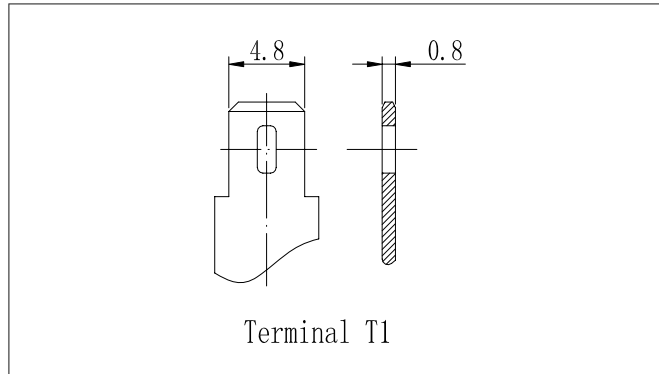
**SPECIFICATIONS**

Model	BB 2.3-12	
Nominal Voltage	12V	
Rated capacity (20 hour rate)	2.3Ah	
Dimensions	Length	70± 1mm(2.76inch)
	Width	48± 1mm(1.89inch)
	Height	98± 1mm(3.86inch)
	Total Height	104± 1mm(4.09inch)
Approx. Weight	0.8kg(1.76lbs)± 5%	

**OUTER DIEMENSIONS (MM)**



**TERMINAL TYPE (MM)**



**CHARACTERISTICS**

Capacity (25 °C)	20HR(10.5V)	2.3Ah
	10HR(10.5V)	2.1Ah
	1HR(9.60V)	1.5Ah
Terminal type		T1
Internal resistance (Fully charged,25 °C)		Approx.60m Ω
Capacity affected by temperature (20HR)	40 °C	102%
	25 °C	100%
	0 °C	85%
	-15 °C	65%
Self-discharge (25 °C)	3 months	Remaining Capacity:91%
	6 months	Remaining Capacity:82%
	12 months	Remaining Capacity:65%
Nominal operating temperature		25°C± 3°C(77°F± 5°F)
Operating temperature range	Discharge	-15°C~50°C(5°F~122°F)
	Charge	-10°C~50°C(14°F~122°F)
	Storage	-20°C~50°C(-4°F~122°F)
Float charging voltage(25°C)		13.60 to 13.80V Temperature compensation: -18mV/°C
Cyclic charging voltage(25°C)		14.50 to 14.90V Temperature compensation: -30mV/°C
Maximum charging current		0.69A
Terminal material		Copper
Maximum discharge current		34.5A(5 sec.)
Designed floating life(20°C)		5 years

**CONSTANT CURRENT DISCHARGE CHARACTERISTICS UNIT: A (25°C)**

F.V/Time	5min	10min	15min	30min	60min	2h	3h	4h	5h	10h	20h
9.60V	8.74	5.52	4.37	2.44	1.50	0.82	0.59	0.47	0.40	0.22	0.117
9.90V	8.48	5.35	4.27	2.39	1.47	0.81	0.58	0.47	0.40	0.22	0.116
10.2V	8.13	5.13	4.11	2.32	1.44	0.81	0.58	0.46	0.39	0.22	0.116
10.5V	7.78	4.91	3.97	2.26	1.41	0.79	0.58	0.46	0.39	0.21	0.115
10.8V	7.34	4.64	3.76	2.18	1.36	0.77	0.56	0.45	0.38	0.21	0.113

**CONSTANT POWER DISCHARGE CHARACTERISTICS UNIT: W (25°C)**

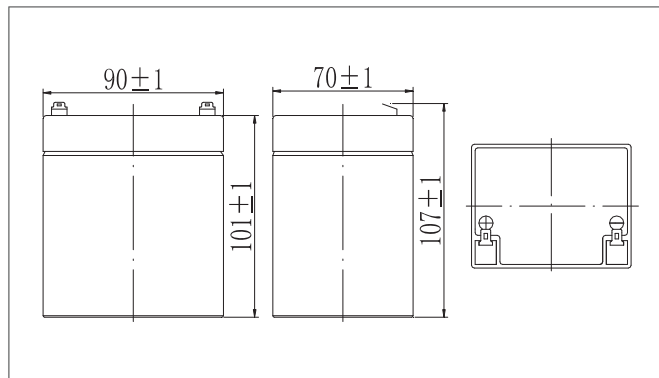
F.V/Time	5min	10min	15min	30min	60min	2h	3h	4h	5h	10h	20h
9.60V	97.5	62.3	49.8	27.9	17.3	9.56	6.97	5.59	4.76	2.61	1.40
9.90V	94.6	60.4	48.6	27.4	17.1	9.50	6.93	5.56	4.73	2.60	1.40
10.2V	90.7	57.9	46.8	26.5	16.6	9.42	6.88	5.52	4.70	2.58	1.39
10.5V	86.8	55.4	45.2	25.9	16.3	9.28	6.83	5.48	4.67	2.57	1.38
10.8V	81.9	52.3	42.8	24.9	15.8	9.04	6.63	5.31	4.53	2.52	1.35

**Note:** The above characteristics data can be obtained within three charge/discharge cycles

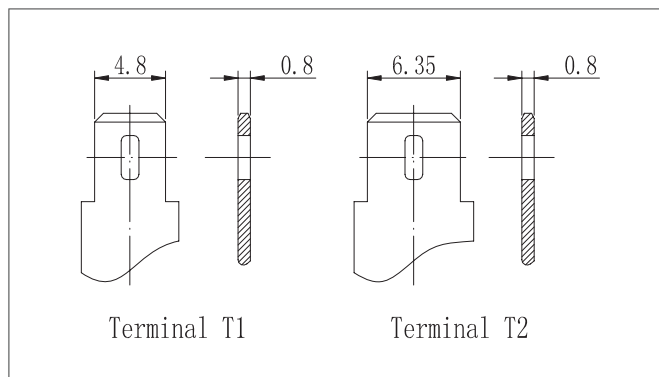
**SPECIFICATIONS**

Model	BB 4.5-12	
Nominal Voltage	12V	
Rated capacity (20 hour rate)	4.5Ah	
Dimensions	Length	90± 1mm(3.54inch)
	Width	70± 1mm(2.76inch)
	Height	101± 1mm(3.98inch)
	Total Height	107± 1mm(4.21inch)
Approx. Weight	1.34kg(2.95lbs)± 5%	

**OUTER DIMENSIONS (MM)**



**TERMINAL TYPE (MM)**



**CHARACTERISTICS**

Capacity (25 °C)	20HR(10.5V)	4.5Ah
	10HR(10.5V)	3.7Ah
	1HR(9.60V)	2.6Ah
Terminal type		T1 / T2
Internal resistance (Fully charged,25 °C)		Approx.55m Ω
Capacity affected by temperature (20HR)	40 °C	102%
	25 °C	100%
	0 °C	85%
	-15 °C	65%
Self-discharge (25 °C)	3 months	Remaining Capacity:91%
	6 months	Remaining Capacity:82%
	12 months	Remaining Capacity:65%
Nominal operating temperature		25°C± 3°C(77°F± 5°F)
Operating temperature range	Discharge	-15°C~50°C(5°F~122°F)
	Charge	-10°C~50°C(14°F~122°F)
	Storage	-20°C~50°C(-4°F~122°F)
Float charging voltage(25°C)		13.60 to 13.80V Temperature compensation: -18mV/°C
Cyclic charging voltage(25°C)		14.50 to 14.90V Temperature compensation: -30mV/°C
Maximum charging current		1.2A
Terminal material		Copper
Maximum discharge current		60A(5 sec.)
Designed floating life(20°C)		5 years

**CONSTANT CURRENT DISCHARGE CHARACTERISTICS UNIT: A (25°C)**

F.V/Time	5min	10min	15min	30min	60min	2h	3h	4h	5h	10h	20h
9.60V	15.2	9.60	7.60	4.24	2.60	1.42	1.02	0.82	0.69	0.38	0.20
9.90V	14.7	9.31	7.42	4.16	2.56	1.41	1.01	0.81	0.69	0.38	0.20
10.2V	14.1	8.93	7.14	4.03	2.50	1.40	1.01	0.81	0.68	0.37	0.20
10.5V	13.5	8.54	6.90	3.93	2.45	1.38	1.00	0.80	0.68	0.37	0.20
10.8V	12.8	8.06	6.54	3.79	2.37	1.34	0.97	0.78	0.66	0.36	0.20

**CONSTANT POWER DISCHARGE CHARACTERISTICS UNIT: W (25°C)**

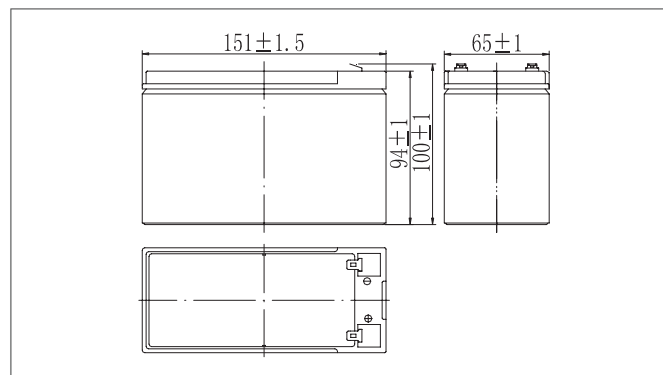
F.V/Time	5min	10min	15min	30min	60min	2h	3h	4h	5h	10h	20h
9.60V	170	108	86.6	48.6	30.1	16.6	12.1	9.72	8.28	4.53	2.44
9.90V	165	105	84.6	47.6	29.7	16.5	12.0	9.66	8.23	4.51	2.43
10.2V	158	101	81.4	46.2	28.9	16.4	12.0	9.59	8.18	4.49	2.41
10.5V	151	96.4	78.7	45.0	28.3	16.1	11.9	9.53	8.12	4.46	2.40
10.8V	142	91.0	74.5	43.4	27.5	15.7	11.5	9.24	7.88	4.37	2.35

**Note:** The above characteristics data can be obtained within three charge/discharge cycles

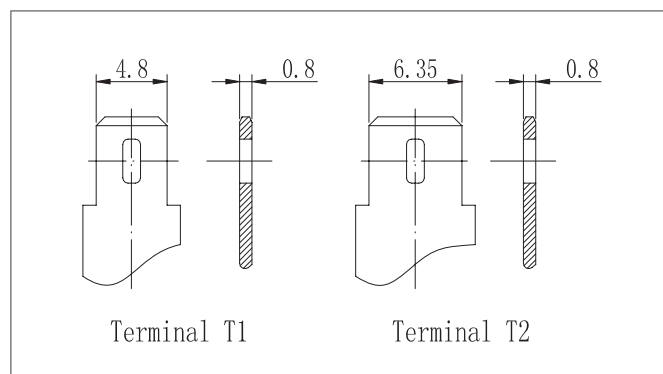
**SPECIFICATIONS**

Model	BB 7.2-12	
Nominal Voltage	12V	
Rated capacity (20 hour rate)	7.2Ah	
Dimensions	Length	151± 1.5mm(5.94inch)
	Width	65± 1mm(2.56inch)
	Height	94± 1mm(3.70inch)
	Total Height	100± 1mm(3.94inch)
Approx. Weight	2.22kg(4.90lbs)± 5%	

**OUTER DIEMENSIONS (MM)**



**TERMINAL TYPE (MM)**



**CHARACTERISTICS**

Capacity (25 °C)	20HR(10.5V)	7.2Ah
	10HR(10.5V)	6.6Ah
	1HR(9.60V)	4.58Ah
Terminal type		T1 / T2
Internal resistance (Fully charged,25 °C)		Approx.28m Ω
Capacity affected by temperature (20HR)	40 °C	102%
	25 °C	100%
	0 °C	85%
	-15 °C	65%
Self-discharge (25 °C)	3 months	Remaining Capacity:91%
	6 months	Remaining Capacity:82%
	12 months	Remaining Capacity:65%
Nominal operating temperature		25°C± 3°C(77°F± 5°F)
Operating temperature range	Discharge	-15°C~50°C(5°F~122°F)
	Charge	-10°C~50°C(14°F~122°F)
	Storage	-20°C~50°C(-4°F~122°F)
Float charging voltage(25°C)		13.60 to 13.80V Temperature compensation: -18mV/°C
Cyclic charging voltage(25°C)		14.50 to 14.90V Temperature compensation: -30mV/°C
Maximum charging current		2.1A
Terminal material		Copper
Maximum discharge current		105A(5 sec.)
Designed floating life(20°C)		5 years

**CONSTANT CURRENT DISCHARGE CHARACTERISTICS UNIT: A (25°C)**

F.V/Time	5min	10min	15min	30min	60min	2h	3h	4h	5h	10h	20h
9.60V	26.8	16.9	13.4	7.47	4.58	2.50	1.80	1.44	1.22	0.67	0.36
9.90V	26.0	16.4	13.1	7.32	4.51	2.49	1.79	1.43	1.22	0.66	0.36
10.2V	24.9	15.7	12.6	7.10	4.40	2.47	1.77	1.42	1.21	0.66	0.35
10.5V	23.8	15.1	12.2	6.93	4.31	2.43	1.76	1.41	1.20	0.66	0.35
10.8V	22.5	14.2	11.5	6.67	4.18	2.37	1.71	1.37	1.16	0.64	0.35

**CONSTANT POWER DISCHARGE CHARACTERISTICS UNIT: W (25°C)**

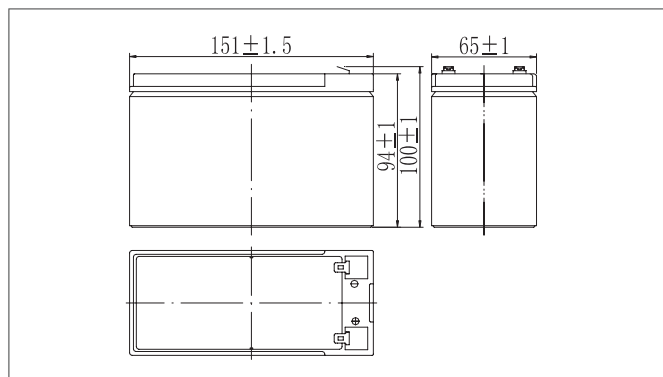
F.V/Time	5min	10min	15min	30min	60min	2h	3h	4h	5h	10h	20h
9.60V	299	191	153	85.6	53.1	29.3	21.4	17.1	14.6	7.99	4.29
9.90V	290	185	149	83.9	52.3	29.1	21.2	17.0	14.5	7.95	4.28
10.2V	278	177	144	81.4	50.9	28.9	21.1	16.9	14.4	7.92	4.26
10.5V	266	170	139	79.4	49.9	28.4	20.9	16.8	14.3	7.87	4.23
10.8V	251	160	131	7.65	48.4	27.7	20.3	16.3	13.9	7.71	4.15

**Note:** The above characteristics data can be obtained within three charge/discharge cycles

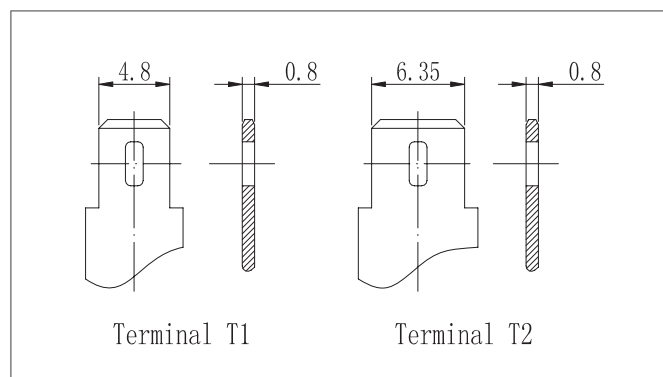
## SPECIFICATIONS

Model	BB7-12	
Nominal Voltage	12V	
Rated capacity (20 hour rate)	7.0Ah	
Dimensions	Length	151±1.5mm(5.94inch)
	Width	65±1mm(2.56inch)
	Height	94±1mm(3.70inch)
	Total Height	100±1mm(3.94inch)
Approx. Weight	2.02kg(4.46lbs)±5%	

## OUTER DIMENSIONS (MM)



## TERMINAL TYPE (MM)



# BB12V - 7AH BLACK BATT.

## CHARACTERISTICS

Capacity (25 °C)	20HR(10.5V)	7.0Ah
	10HR(10.5V)	6Ah
	1HR(9.60V)	4.23Ah
Terminal type		T1/T2
Internal resistance (Fully charged,25 °C)		Approx.30m Ω
Capacity affected by temperature (20HR)	40 °C	102%
	25 °C	100%
	0 °C	85%
	-15 °C	65%
Self-discharge (25 °C)	3 months	Remaining Capacity:91%
	6 months	Remaining Capacity:82%
	12 months	Remaining Capacity:65%
Nominal operating temperature		25°C± 3°C(77°F± 5°F)
Operating temperature range	Discharge	-15°C~50°C(5°F~122°F)
	Charge	-10°C~50°C(14°F~122°F)
	Storage	-20°C~50°C(-4°F~122°F)
Float charging voltage(25°C)		13.60 to 13.80V Temperature compensation: -18mV/°C
Cyclic charging voltage(25°C)		14.50 to 14.90V Temperature compensation: -30mV/°C
Maximum charging current		1.95A
Terminal material		Copper
Maximum discharge current		97.5A(5 sec.)
Designed floating life(20°C)		5 years

## CONSTANT CURRENT DISCHARGE CHARACTERISTICS UNIT: A (25°C)

F.V/Time	5min	10min	15min	30min	60min	2h	3h	4h	5h	8h	10h	20h
9.60V	24.7	15.6	12.4	6.89	4.23	2.31	1.66	1.33	1.13	0.73	0.61	0.35
9.90V	24.0	15.1	12.1	6.75	4.16	2.30	1.65	1.32	1.12	0.73	0.61	0.35
10.2V	23.0	14.5	11.6	6.55	4.06	2.28	1.64	1.31	1.11	0.73	0.61	0.35
10.5V	22.0	13.9	11.2	6.39	3.98	2.24	1.63	1.30	1.11	0.71	0.60	0.33
10.8V	20.7	13.1	10.6	6.15	3.85	2.18	1.58	1.26	1.07	0.69	0.59	0.32

## CONSTANT POWER DISCHARGE CHARACTERISTICS UNIT: W (25°C)

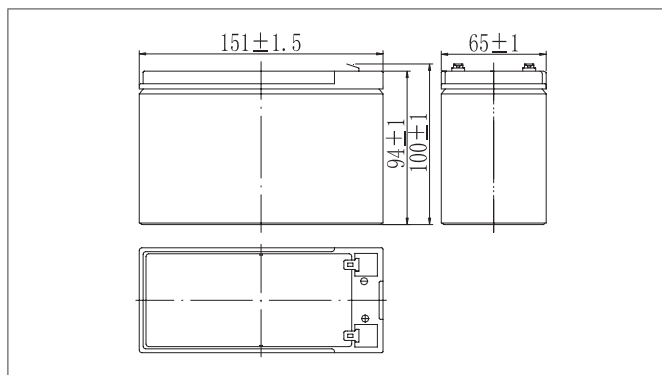
F.V/Time	5min	10min	15min	30min	60min	2h	3h	4h	5h	8h	10h	20h
9.60V	276	176	141	79.0	48.9	27.0	19.7	15.8	13.5	8.73	7.36	3.96
9.90V	267	171	137	77.4	48.2	26.9	19.6	15.7	13.4	8.70	7.33	3.94
10.2V	256	164	132	75.0	47.0	26.6	19.4	15.6	13.3	8.68	7.30	3.92
10.5V	245	157	128	73.2	46.0	26.2	19.3	15.5	13.2	8.56	7.25	3.90
10.8V	232	148	121	70.5	44.6	25.6	18.7	15.0	12.8	8.31	7.11	3.82

**Note:** The above characteristics data can be obtained within three charge/discharge cycles

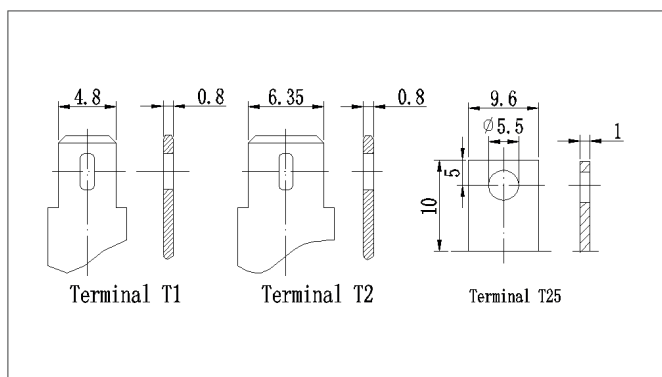
## SPECIFICATIONS

Model	BB 9-12	
Nominal Voltage	12V	
Rated capacity (20 hour rate)	9Ah	
Dimensions	Length	151±1.5mm(5.94inch)
	Width	65±1mm(2.56inch)
	Height	94±1mm(3.70inch)
	Total Height	100±1mm(3.94inch)
Approx. Weight	2.60kg(5.73lbs)±5%	

## OUTER DIMENSIONS (MM)



## TERMINAL TYPE (MM)



# BB12V - 9AH **BLACK BATT.**

## CHARACTERISTICS

Capacity (25 °C)	20HR(10.5V)	9Ah
	10HR(10.5V)	8.4Ah
	1HR(9.60V)	5.8Ah
Terminal type		T1 / T2 / T25
Internal resistance (Fully charged,25 °C)		Approx.19m Ω
Capacity affected by temperature (20HR)	40 °C	102%
	25 °C	100%
	0 °C	85%
	-15 °C	65%
Self-discharge (25 °C)	3 months	Remaining Capacity:91%
	6 months	Remaining Capacity:82%
	12 months	Remaining Capacity:65%
Nominal operating temperature		25°C± 3°C(77°F± 5°F)
Operating temperature range	Discharge	-15°C~50°C(5°F~122°F)
	Charge	-10°C~50°C(14°F~122°F)
	Storage	-20°C~50°C(-4°F~122°F)
Float charging voltage(25°C)		13.60 to 13.80V Temperature compensation: -18mV/°C
Cyclic charging voltage(25°C)		14.50 to 14.90V Temperature compensation: -30mV/°C
Maximum charging current		2.7A
Terminal material		Copper
Maximum discharge current		135A(5 sec.)
Designed floating life(20°C)		5 years

## CONSTANT CURRENT DISCHARGE CHARACTERISTICS UNIT: A (25°C)

F.V/Time	5min	10min	15min	30min	60min	2h	3h	4h	5h	10h	20h
9.60V	34.2	21.6	17.1	9.54	5.85	3.20	2.30	1.84	1.56	0.85	0.46
9.90V	33.2	21.0	16.7	9.35	5.76	3.18	2.28	1.83	1.55	0.85	0.45
10.2V	31.8	21.1	16.1	9.06	5.62	3.15	2.27	1.81	1.54	0.84	0.45
10.5V	30.4	19.2	15.5	8.84	5.50	3.10	2.25	1.80	1.53	0.84	0.45
10.8V	28.7	18.1	14.7	8.52	5.34	3.02	2.18	1.75	1.48	0.82	0.44

## CONSTANT POWER DISCHARGE CHARACTERISTICS UNIT: W (25°C)

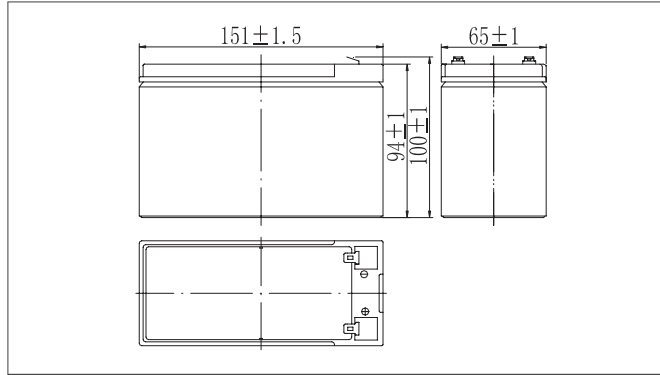
F.V/Time	5min	10min	15min	30min	60min	2h	3h	4h	5h	10h	20h
9.60V	382	244	195	109	67.7	37.4	27.3	21.9	18.6	10.2	5.48
9.90V	370	236	190	107	66.7	37.2	27.1	21.7	18.5	10.2	5.46
10.2V	355	227	183	104	65.0	36.9	26.9	21.6	18.4	10.1	5.43
10.5V	340	217	177	101	63.7	36.3	26.7	21.4	18.3	10.0	5.40
10.8V	321	205	168	97.6	61.8	35.4	25.9	21.8	17.7	9.84	5.29

**Note:** The above characteristics data can be obtained within three charge/discharge cycles

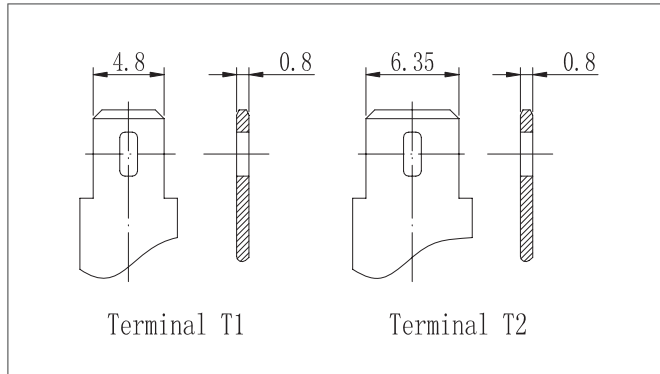
## SPECIFICATIONS

Model	BBE 9-12	
Nominal Voltage	12V	
Rated capacity (20 hour rate)	9Ah	
Dimensions	Length	151± 1.5mm(5.94inch)
	Width	65± 1mm(2.56inch)
	Height	94± 1mm(3.70inch)
	Total Height	100± 1mm(3.94inch)
Approx. Weight	2.3kg(5.07lbs)± 5%	

## OUTER DIMENSIONS (MM)



## TERMINAL TYPE (MM)



## CHARACTERISTICS

Capacity (25 °C)	20HR(10.5V)	9Ah
	10HR(10.5V)	7Ah
	1HR(9.60V)	4.88Ah
Terminal type		T1 / T2
Internal resistance (Fully charged,25 °C)		Approx.22m Ω
Capacity affected by temperature (20HR)	40 °C	102%
	25 °C	100%
	0 °C	85%
	-15 °C	65%
Self-discharge (25 °C)	3 months	Remaining Capacity:91%
	6 months	Remaining Capacity:82%
	12 months	Remaining Capacity:65%
Nominal operating temperature		25°C± 3°C(77°F± 5°F)
Operating temperature range	Discharge	-15°C~50°C(5°F~122°F)
	Charge	-10°C~50°C(14°F~122°F)
	Storage	-20°C~50°C(-4°F~122°F)
Float charging voltage(25°C)		13.60 to 13.80V Temperature compensation: -18mV/°C
Cyclic charging voltage(25°C)		14.50 to 14.90V Temperature compensation: -30mV/°C
Maximum charging current		2.25A
Terminal material		Copper
Maximum discharge current		112.5A(5 sec.)
Designed floating life(20°C)		5 years

## CONSTANT CURRENT DISCHARGE CHARACTERISTICS UNIT: A (25°C)

F.V/Time	5min	10min	15min	30min	60min	2h	3h	4h	5h	10h	20h
9.60V	28.5	18.0	14.3	7.95	4.88	2.66	1.91	1.53	1.30	0.71	0.381
9.90V	27.6	17.5	13.9	7.79	4.80	2.65	1.90	1.52	1.29	0.71	0.379
10.2V	26.5	16.7	13.4	7.55	4.68	2.63	1.89	1.51	1.28	0.70	0.377
10.5V	25.4	16.0	12.9	7.37	4.59	2.59	1.88	1.50	1.28	0.70	0.375
10.8V	23.9	15.1	12.3	7.10	4.45	2.52	1.82	1.46	1.24	0.68	0.368

## CONSTANT POWER DISCHARGE CHARACTERISTICS UNIT: W (25°C)

F.V/Time	5min	10min	15min	30min	60min	2h	3h	4h	5h	10h	20h
9.60V	318	203	162	91.1	56.5	31.2	22.7	18.2	15.5	8.50	4.57
9.90V	309	197	159	89.3	55.6	31.0	22.6	18.1	15.4	8.46	4.55
10.2V	296	189	153	86.6	54.2	30.7	22.4	18.0	15.3	8.42	4.53
10.5V	283	181	148	84.5	53.1	30.3	22.3	17.9	15.2	8.37	4.50
10.8V	267	171	140	81.4	51.5	29.5	21.6	17.3	14.8	8.20	4.41

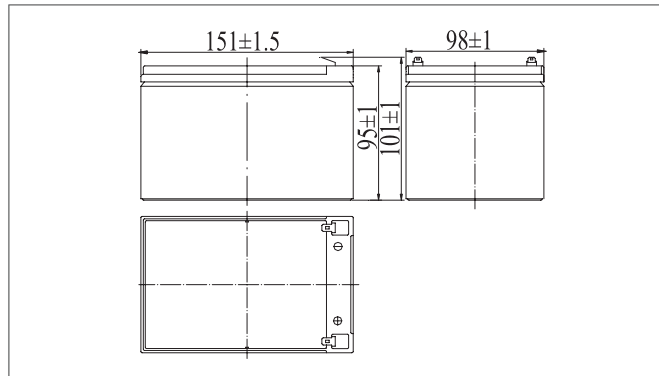
**Note:** The above characteristics data can be obtained within three charge/discharge cycles



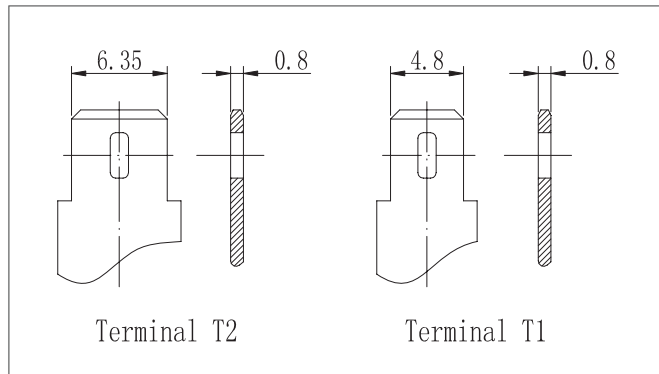
**SPECIFICATIONS**

Model	BB 12-12	
Nominal Voltage	12V	
Rated capacity (20 hour rate)	12Ah	
Dimensions	Length	151± 1.5mm(5.94inch)
	Width	98± 1mm(3.86inch)
	Height	95± 1mm(3.74inch)
	Total Height	101± 1mm(3.98inch)
Approx. Weight	3.15kg(7.05lbs)± 5%	

**OUTER DIEMENSIONS (MM)**



**TERMINAL TYPE (MM)**



**CHARACTERISTICS**

Capacity (25 °C)	20HR(10.5V)	12Ah
	10HR(10.5V)	9.3Ah
	1HR(9.60V)	6.5Ah
Terminal type		T2 / T1
Internal resistance (Fully charged,25 °C)		Approx.32m Ω
Capacity affected by temperature (20HR)	40 °C	102%
	25 °C	100%
	0 °C	85%
	-15 °C	65%
Self-discharge (25 °C)	3 months	Remaining Capacity:91%
	6 months	Remaining Capacity:82%
	12 months	Remaining Capacity:65%
Nominal operating temperature		25°C± 3°C(77°F± 5°F)
Operating temperature range	Discharge	-15°C~50°C(5°F~122°F)
	Charge	-10°C~50°C(14°F~122°F)
	Storage	-20°C~50°C(-4°F~122°F)
Float charging voltage(25°C)		13.60 to 13.80V Temperature compensation: -18mV/°C
Cyclic charging voltage(25°C)		14.50 to 14.90V Temperature compensation: -30mV/°C
Maximum charging current		3.0A
Terminal material		Copper
Maximum discharge current		150A(5 sec.)
Designed floating life(20°C)		5 years

**CONSTANT CURRENT DISCHARGE CHARACTERISTICS UNIT: A (25°C)**

F.V/Time	5min	10min	15min	30min	60min	2h	3h	4h	5h	10h	20h
9.60V	39.4	24.0	19.0	10.6	6.50	3.55	2.55	2.04	1.73	0.94	0.51
9.90V	38.7	23.3	18.5	10.4	6.40	3.53	2.54	2.03	1.72	0.94	0.51
10.2V	36.8	22.3	17.9	10.1	6.24	3.50	2.52	2.01	1.71	0.94	0.50
10.5V	35.4	21.4	17.3	9.83	6.12	3.45	2.50	2.00	1.70	0.93	0.50
10.8V	33.9	20.2	16.3	9.47	5.93	3.36	2.43	1.94	1.65	0.91	0.49

**CONSTANT POWER DISCHARGE CHARACTERISTICS UNIT: W (25°C)**

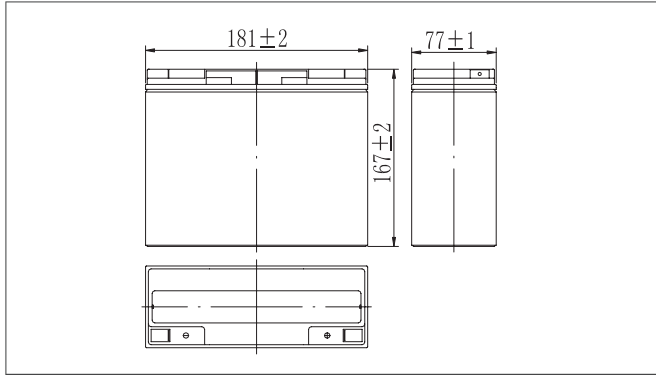
F.V/Time	5min	10min	15min	30min	60min	2h	3h	4h	5h	10h	20h
9.60V	385	271	217	121	75.3	41.6	30.3	24.3	20.7	11.3	6.09
9.90V	379	263	211	119	74.1	41.3	30.1	24.2	20.6	11.3	6.07
10.2V	363	252	204	115	72.3	41.0	29.9	24.0	20.4	11.2	6.04
10.5V	350	241	197	113	70.8	40.3	29.7	23.8	20.3	11.2	6.00
10.8V	337	227	186	108	68.6	39.3	28.8	23.8	19.7	10.9	5.88

**Note:** The above characteristics data can be obtained within three charge/discharge cycles

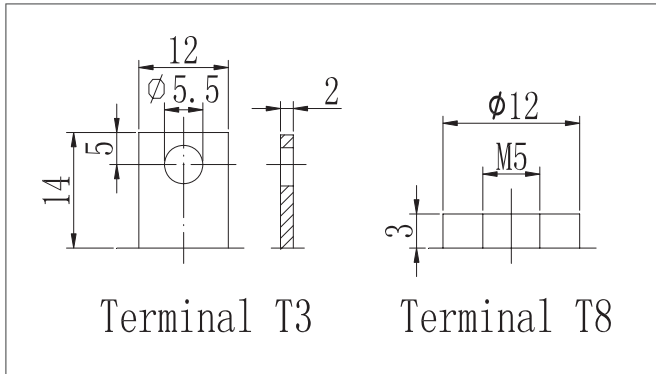
SPECIFICATIONS

Model	BB 18-12	
Nominal Voltage	12V	
Rated capacity (20 hour rate)	18Ah	
Dimensions	Length	181± 2mm(7.13inch)
	Width	77± 1mm(3.03inch)
	Height	167± 2mm(6.57inch)
	Total Height	167± 2mm(6.57inch)
Approx. Weight	5.0kg(11.0lbs)± 4%	

OUTER DIMENSIONS (MM)



TERMINAL TYPE (MM)



CHARACTERISTICS

Capacity (25 °C)	20HR(10.5V)	18Ah
	10HR(10.5V)	14Ah
	1HR(9.60V)	9.75Ah
Terminal type		T3 / T8
Internal resistance (Fully charged,25 °C)		Approx.18m Ω
Capacity affected by temperature (20HR)	40 °C	102%
	25 °C	100%
	0 °C	85%
	-15 °C	65%
Self-discharge (25 °C)	3 months	Remaining Capacity:91%
	6 months	Remaining Capacity:82%
	12 months	Remaining Capacity:65%
Nominal operating temperature		25°C± 3°C(77°F± 5°F)
Operating temperature range	Discharge	-15°C~50°C(5°F~122°F)
	Charge	-10°C~50°C(14°F~122°F)
	Storage	-20°C~50°C(-4°F~122°F)
Float charging voltage(25°C)		13.60 to 13.80V Temperature compensation: -18mV/°C
Cyclic charging voltage(25°C)		14.50 to 14.90V Temperature compensation: -30mV/°C
Maximum charging current		4.5A
Terminal material		Copper
Maximum discharge current		225A(5 sec.)
Designed floating life(20°C)		5 years

CONSTANT CURRENT DISCHARGE CHARACTERISTICS UNIT: A (25°C)

F.V/Time	5min	10min	15min	30min	60min	2h	3h	4h	5h	10h	20h
9.60V	61.80	36.0	28.5	15.9	9.75	5.33	3.83	3.06	2.60	1.42	0.76
9.90V	59.50	34.9	27.8	15.6	9.60	5.30	3.80	3.04	2.59	1.41	0.76
10.2V	57.20	33.5	26.8	15.1	9.36	5.25	3.78	3.02	2.57	1.40	0.75
10.5V	55.30	32.0	25.9	14.7	9.17	5.17	3.75	3.00	2.55	1.40	0.75
10.8V	53.50	30.2	24.5	14.2	8.89	5.04	3.64	2.91	2.47	1.37	0.74

CONSTANT POWER DISCHARGE CHARACTERISTICS UNIT: W (25°C)

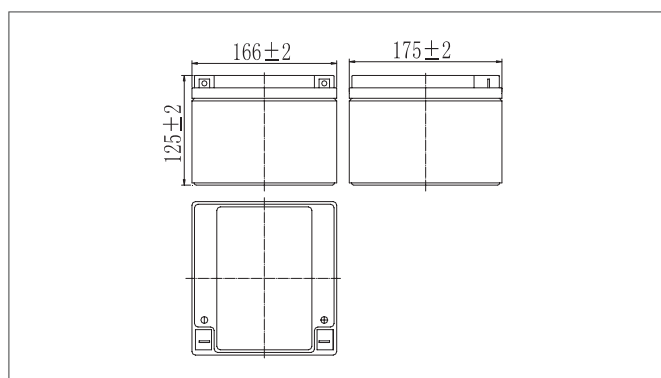
F.V/Time	5min	10min	15min	30min	60min	2h	3h	4h	5h	10h	20h
9.60V	725.00	406	325	182	113	62.3	45.4	36.4	31.1	17.0	9.14
9.90V	715.00	394	317	179	111	62.0	45.2	36.2	30.9	16.9	9.10
10.2V	688.00	378	305	173	108	61.4	44.9	36.0	30.7	16.8	9.05
10.5V	658.00	361	295	169	106	60.5	44.6	35.7	30.4	16.7	9.00
10.8V	640.00	341	279	163	103	59.0	43.2	34.7	29.5	16.4	8.82

**Note:** The above characteristics data can be obtained within three charge/discharge cycles

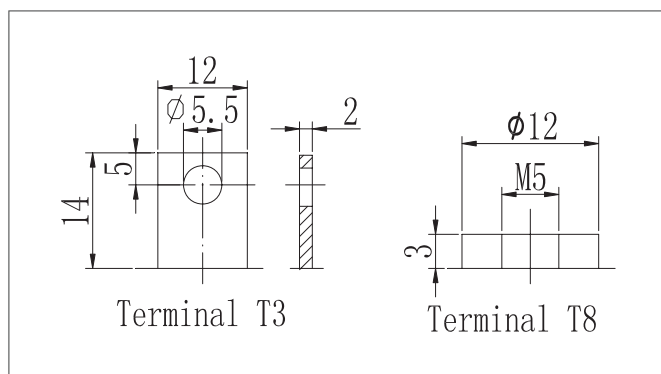
## SPECIFICATIONS

Model	BB 26-12	
Nominal Voltage	12V	
Rated capacity (20 hour rate)	26Ah	
Dimensions	Length	166±2mm(6.54inch)
	Width	175±2mm(6.89inch)
	Height	125±2mm(4.92inch)
	Total Height	125±2mm(4.92inch)
Approx. Weight	7.8kg(17.2lbs)± 4%	

## OUTER DIMENSIONS (MM)



## TERMINAL TYPE (MM)



# BB12V - 26AH **BLACK BATT.**

## CHARACTERISTICS

Capacity (25 °C)	20HR(10.5V)	26Ah
	10HR(10.5V)	22.3Ah
	1HR(9.60V)	15Ah
Terminal type		T3 / T8
Internal resistance (Fully charged,25 °C)		Approx.14m Ω
Capacity affected by temperature (20HR)	40 °C	102%
	25 °C	100%
	0 °C	85%
	-15 °C	65%
Self-discharge (25 °C)	3 months	Remaining Capacity:91%
	6 months	Remaining Capacity:82%
	12 months	Remaining Capacity:65%
Nominal operating temperature		25°C± 3°C(77°F± 5°F)
Operating temperature range	Discharge	-15°C~50°C(5°F~122°F)
	Charge	-10°C~50°C(14°F~122°F)
	Storage	-20°C~50°C(-4°F~122°F)
Float charging voltage(25°C)		13.60 to 13.80V Temperature compensation: -18mV/°C
Cyclic charging voltage(25°C)		14.50 to 14.90V Temperature compensation: -30mV/°C
Maximum charging current		7.2A
Terminal material		Copper
Maximum discharge current		360A(5 sec.)
Designed floating life(20°C)		10 years

## CONSTANT CURRENT DISCHARGE CHARACTERISTICS UNIT: A (25°C)

F.V/Time	5min	10min	15min	30min	60min	2h	3h	4h	5h	10h	20h
9.60V	95.20	55.2	43.7	24.4	15.0	8.53	6.12	4.90	4.16	2.27	1.22
9.90V	91.80	53.5	42.7	23.9	14.7	8.48	6.08	4.87	4.14	2.26	1.21
10.2V	88.50	51.3	41.1	23.2	14.4	8.40	6.04	4.83	4.11	2.25	1.21
10.5V	85.50	49.1	39.7	22.6	14.1	8.27	6.00	4.80	4.08	2.23	1.20
10.8V	82.50	46.4	37.6	21.8	13.6	8.46	5.82	4.66	3.96	2.19	1.18

## CONSTANT POWER DISCHARGE CHARACTERISTICS UNIT: W (25°C)

F.V/Time	5min	10min	15min	30min	60min	2h	3h	4h	5h	10h	20h
9.60V	1120	623	498	279	173	99.8	72.7	58.3	49.7	27.2	14.6
9.90V	1105	604	486	274	171	99.2	72.3	58.0	49.4	27.1	14.6
10.2V	1060	579	468	265	166	98.3	71.8	57.6	49.1	26.9	14.5
10.5V	1015	554	452	259	163	96.8	71.3	57.2	48.7	26.8	14.4
10.8V	985	523	428	249	158	94.3	69.1	55.5	47.3	26.2	14.1

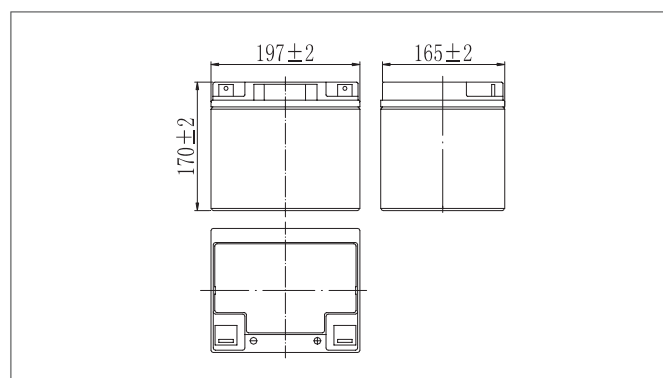
**Note:** The above characteristics data can be obtained within three charge/discharge cycles

SPECIFICATIONS

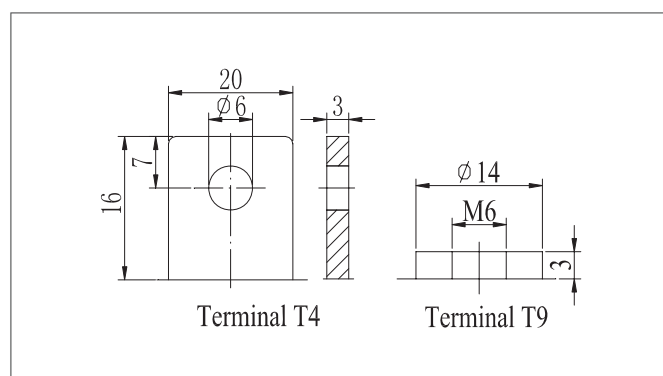
BB12V - 40AH **BLACK BATT.**

Model	BB 40-12	
Nominal Voltage	12V	
Rated capacity (20 hour rate)	40Ah	
Dimensions	Length	197± 2mm(7.76inch)
	Width	165± 2mm(6.50inch)
	Height	170± 2mm(6.69inch)
	Total Height	170± 2mm(6.69inch)
Approx. Weight	12.0kg(26.9lbs)± 5%	

OUTER DIEMENSIONS (MM)



TERMINAL TYPE (MM)



CHARACTERISTICS

Capacity (25 °C)	20HR(10.5V)	40Ah
	10HR(10.5V)	38.0Ah
	1HR(9.60V)	24.0Ah
Terminal type		T4/T9
Internal resistance (Fully charged,25 °C)		Approx.10m Ω
Capacity affected by temperature (20HR)	40 °C	102%
	25 °C	100%
	0 °C	85%
	-15 °C	65%
Self-discharge (25 °C)	3 months	Remaining Capacity:91%
	6 months	Remaining Capacity:82%
	12 months	Remaining Capacity:65%
Nominal operating temperature		25°C± 3°C(77°F± 5°F)
Operating temperature range	Discharge	-15°C~50°C(5°F~122°F)
	Charge	-10°C~50°C(14°F~122°F)
	Storage	-20°C~50°C(-4°F~122°F)
Float charging voltage(25°C)		13.60 to 13.80V Temperature compensation: -18mV/°C
Cyclic charging voltage(25°C)		14.50 to 14.90V Temperature compensation: -30mV/°C
Maximum charging current		11.4A
Terminal material		Copper
Maximum discharge current		380A(5 sec.)
Designed floating life(20°C)		10 years

CONSTANT CURRENT DISCHARGE CHARACTERISTICS UNIT: A (25°C)

F.V/Time	5min	10min	15min	30min	60min	2h	3h	4h	5h	10h	20h
1.85V/cell	87.0	61.8	57.7	34.6	18.9	11.8	8.66	7.08	5.92	3.49	1.83
1.80V/cell	98.9	70.2	64.5	38.7	20.9	12.8	9.50	7.63	6.37	3.80	2.00
1.75V/cell	107.4	76.1	68.9	41.3	21.6	13.2	9.74	7.82	6.52	3.84	2.02
1.70V/cell	114.9	81.2	72.4	43.5	22.4	13.7	9.92	8.02	6.66	3.88	2.04
1.67V/cell	118.9	83.7	73.6	44.1	22.9	13.8	10.1	8.13	6.74	3.91	2.05

CONSTANT POWER DISCHARGE CHARACTERISTICS UNIT: W (25°C)

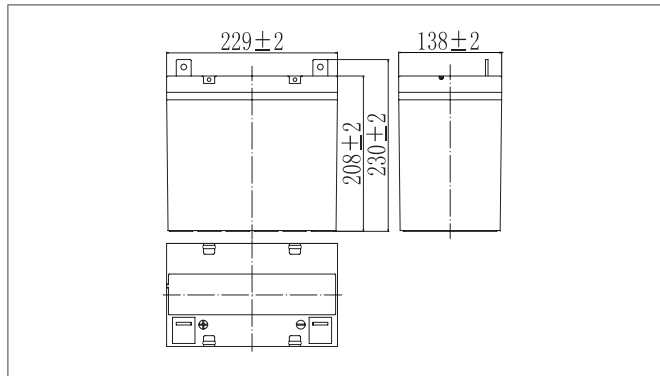
F.V/Time	5min	10min	15min	30min	60min	2h	3h	4h	5h	10h	20h
1.85V/cell	159.5	114.2	102.7	61.7	40.0	22.7	17.4	13.8	11.5	6.86	3.60
1.80V/cell	178.4	127.8	114.9	69.0	43.8	24.6	18.6	14.7	12.4	7.28	3.82
1.75V/cell	190.4	136.4	122.6	73.5	45.1	25.3	19.0	15.1	12.6	7.39	3.88
1.70V/cell	200.2	143.4	128.9	77.4	46.4	26.0	19.6	15.4	12.8	7.49	3.93
1.67V/cell	203.4	145.7	131.0	78.6	47.1	26.2	19.9	15.6	13.0	7.54	3.96

**Note:** The above characteristics data can be obtained within three charge/discharge cycles

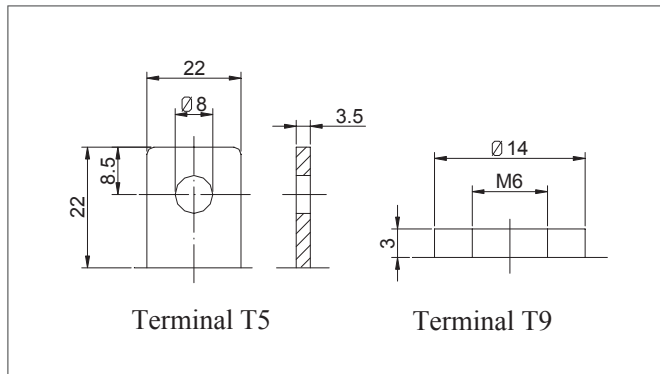
## SPECIFICATIONS

Model	BB 55-12	
Nominal Voltage	12V	
Rated capacity (20 hour rate)	55Ah	
Dimensions	Length	257± 2mm(10.1inch)
	Width	13.2± 2mm(5.19inch)
	Height	200± 2mm(7.87inch)
	Total Height	200± 2mm(7.87inch)
Approx. Weight	15.7kg(34.6lbs)± 5%	

## OUTER DIEMENSIONS (MM)



## TERMINAL TYPE (MM)



## CHARACTERISTICS

Capacity (25 °C)	20HR(10.5V)	55Ah
	10HR(10.5V)	50.0Ah
	1HR(9.60V)	31.9Ah
Terminal type		T5/T9
Internal resistance (Fully charged,25 °C)		Approx.9.0m Ω
Capacity affected by temperature (20HR)	40 °C	102%
	25 °C	100%
	0 °C	85%
	-15 °C	65%
Self-discharge (25 °C)	3 months	Remaining Capacity:91%
	6 months	Remaining Capacity:82%
	12 months	Remaining Capacity:65%
Nominal operating temperature		25°C± 3°C(77°F± 5°F)
Operating temperature range	Discharge	-15°C~50°C(5°F~122°F)
	Charge	-10°C~50°C(14°F~122°F)
	Storage	-20°C~50°C(-4°F~122°F)
Float charging voltage(25°C)		13.60 to 13.80V Temperature compensation: -18mV/°C
Cyclic charging voltage(25°C)		14.50 to 14.90V Temperature compensation: -30mV/°C
Maximum charging current		15.0A
Terminal material		Copper
Maximum discharge current		500A(5 sec.)
Designed floating life(20°C)		10 years

## CONSTANT CURRENT DISCHARGE CHARACTERISTICS UNIT: A (25°C)

F.V/Time	5min	10min	15min	30min	60min	2h	3h	4h	5h	10h	20h
1.85V/cell	102.0	72.5	64.1	45.1	27.9	17.0	12.5	9.79	8.50	4.78	2.53
1.80V/cell	115.9	82.3	72.7	49.1	28.9	17.6	13.6	10.5	8.94	5.00	2.63
1.75V/cell	125.9	89.2	78.7	50.1	30.4	18.5	13.8	10.7	9.10	5.05	2.65
1.70V/cell	134.6	95.1	83.6	51.1	31.0	18.9	14.1	10.8	9.25	5.10	2.68
1.67V/cell	139.3	98.2	86.0	51.9	31.4	19.1	14.2	11.0	9.44	5.17	2.71

## CONSTANT POWER DISCHARGE CHARACTERISTICS UNIT: W (25°C)

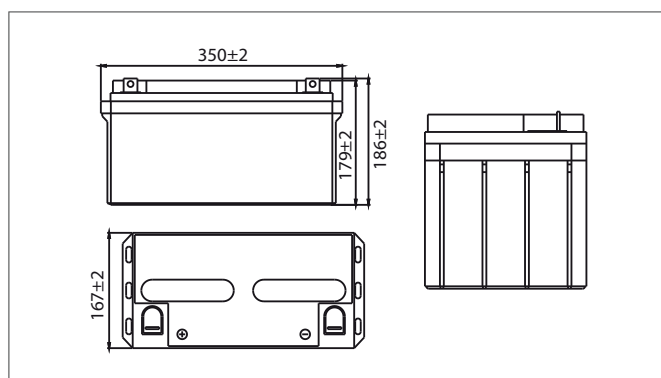
F.V/Time	5min	10min	15min	30min	60min	2h	3h	4h	5h	10h	20h
1.85V/cell	184.6	132.2	119.0	84.4	52.9	32.4	23.9	18.8	16.4	9.31	4.94
1.80V/cell	206.5	147.9	133.1	91.2	54.5	33.3	25.8	20.0	17.2	9.73	5.11
1.75V/cell	207.4	157.8	142.1	92.4	57.0	35.0	26.3	20.3	17.4	9.82	5.16
1.70V/cell	231.7	165.9	149.4	93.4	57.8	35.5	26.7	20.6	17.7	9.91	5.21
1.67V/cell	235.4	168.6	151.8	94.1	58.3	35.9	26.8	20.9	18.0	10.0	5.27

**Note:** The above characteristics data can be obtained within three charge/discharge cycles

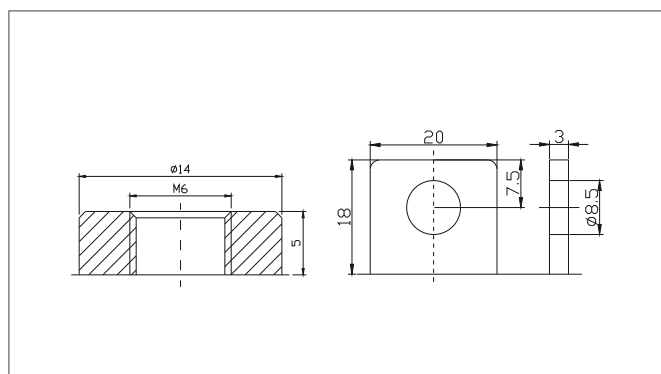
## SPECIFICATIONS

Model	BB 65-12	
Nominal Voltage	12V	
Rated capacity (20 hour rate)	65Ah	
Dimensions	Length	348± 2mm(13.7inch)
	Width	167± 2mm(6.57inch)
	Height	178± 2mm(7.01inch)
	Total Height	178± 2mm(7.01inch)
Approx. Weight	19.2kg(42.3lbs)± 5%	

## OUTER DIMENSIONS (MM)



## TERMINAL TYPE (MM)



## CONSTANT CURRENT DISCHARGE CHARACTERISTICS UNIT: A (25°C)

F.V/Time	5min	10min	15min	30min	60min	2h	3h	4h	5h	10h	20h
1.85V/cell	135.3	101.0	84.1	54.3	34.2	20.6	15.5	12.4	10.3	6.09	3.27
1.80V/cell	157.7	119.1	97.8	61.4	37.9	22.4	16.8	13.3	11.1	6.50	3.45
1.75V/cell	172.1	127.7	103.5	64.2	39.3	23.1	17.2	13.7	11.4	6.60	3.49
1.70V/cell	186.4	136.2	109.4	67.0	40.7	23.8	17.7	14.0	11.6	6.70	3.53
1.67V/cell	194.6	141.2	112.8	68.7	41.6	24.2	18.0	14.2	11.8	6.76	3.56

## CONSTANT POWER DISCHARGE CHARACTERISTICS UNIT: W (25°C)

F.V/Time	5min	10min	15min	30min	60min	2h	3h	4h	5h	10h	20h
1.85V/cell	257.0	193.3	161.6	105.0	66.6	40.2	30.4	24.3	20.3	12.1	6.49
1.80V/cell	295.1	225.2	186.0	117.7	73.2	43.5	32.8	26.1	21.8	12.8	6.84
1.75V/cell	317.1	238.6	194.7	122.0	75.3	44.6	33.5	26.6	22.3	13.0	6.93
1.70V/cell	337.8	251.1	203.4	126.2	77.6	45.8	34.3	27.2	22.7	13.2	7.01
1.67V/cell	349.4	258.3	210.4	128.7	78.8	46.4	34.7	27.5	22.9	13.3	7.06

**Note:** The above characteristics data can be obtained within three charge/discharge cycles

# BB12V - 65AH **BLACK BATT.**

## CHARACTERISTICS

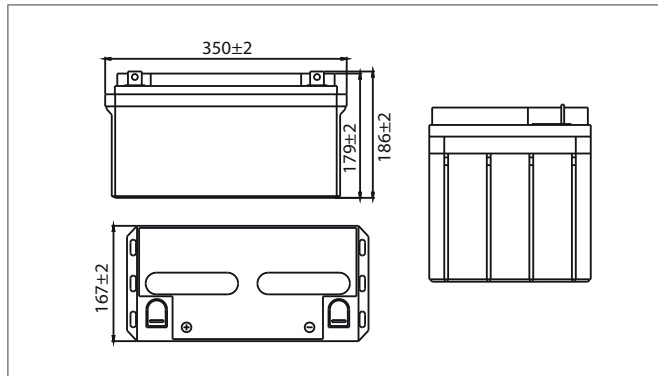
Capacity (25 °C)	20HR(10.5V)	69.0Ah
	10HR(10.5V)	65.0Ah
	1HR(9.60V)	43.6Ah
Terminal type		T9/T5
Internal resistance (Fully charged,25 °C)		Approx.7.0m Ω
Capacity affected by temperature (20HR)	40 °C	102%
	25 °C	100%
	0 °C	85%
	-15 °C	65%
Self-discharge (25 °C)	3 months	Remaining Capacity:91%
	6 months	Remaining Capacity:82%
	12 months	Remaining Capacity:65%
Nominal operating temperature		25°C± 3°C(77°F± 5°F)
Operating temperature range	Discharge	-15°C~50°C(5°F~122°F)
	Charge	-10°C~50°C(14°F~122°F)
	Storage	-20°C~50°C(-4°F~122°F)
Float charging voltage(25°C)		13.60 to 13.80V Temperature compensation: -18mV/°C
Cyclic charging voltage(25°C)		14.50 to 14.90V Temperature compensation: -30mV/°C
Maximum charging current		19.5A
Terminal material		Copper
Maximum discharge current		650A(5 sec.)
Designed floating life(20°C)		10 years

SPECIFICATIONS

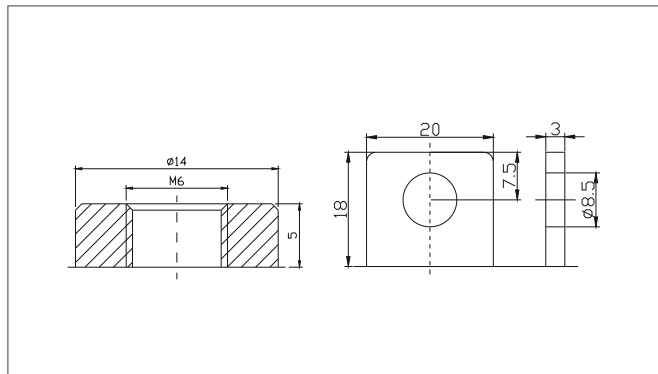
BB12V - 80AH **BLACK BATT.**

Model	BB 80-12	
Nominal Voltage	12V	
Rated capacity (20 hour rate)	80Ah	
Dimensions	Length	260± 2mm(10.2inch)
	Width	168± 2mm(6.61inch)
	Height	208± 2mm(8.19inch)
	Total Height	214± 2mm(8.43inch)
Approx. Weight	23.8kg(52.36lbs)± 5%	

OUTER DIMENSIONS (MM)



TERMINAL TYPE (MM)



CHARACTERISTICS

Capacity (25 °C)	20HR(10.5V)	85.6Ah
	10HR(10.5V)	80.0Ah
	1HR(9.60V)	52.0Ah
Terminal type		T5/T9
Internal resistance (Fully charged,25 °C)		Approx.6.2m Ω
Capacity affected by temperature (20HR)	40 °C	102%
	25 °C	100%
	0 °C	85%
	-15 °C	65%
Self-discharge (25 °C)	3 months	Remaining Capacity:91%
	6 months	Remaining Capacity:82%
	12 months	Remaining Capacity:65%
Nominal operating temperature		25°C± 3°C(77°F± 5°F)
Operating temperature range	Discharge	-15°C~50°C(5°F~122°F)
	Charge	-10°C~50°C(14°F~122°F)
	Storage	-20°C~50°C(-4°F~122°F)
Float charging voltage(25°C)		13.60 to 13.80V Temperature compensation: -18mV/°C
Cyclic charging voltage(25°C)		14.50 to 14.90V Temperature compensation: -30mV/°C
Maximum charging current		24.0A
Terminal material		Copper
Maximum discharge current		800A(5 sec.)
Designed floating life(20°C)		10 years

CONSTANT CURRENT DISCHARGE CHARACTERISTICS UNIT: A (25°C)

F.V/Time	5min	10min	15min	30min	60min	2h	3h	4h	5h	10h	20h
1.85V/cell	162.8	115.7	104.7	73.6	45.6	27.8	20.4	16.0	13.9	7.79	4.13
1.80V/cell	185.1	131.4	118.6	80.1	47.2	28.7	22.1	17.1	14.6	8.00	4.28
1.75V/cell	201.1	142.5	128.4	81.8	49.4	30.2	22.5	17.4	14.9	8.24	4.33
1.70V/cell	215.0	151.9	136.4	83.4	50.5	30.8	23.0	17.7	15.1	8.32	4.37
1.67V/cell	222.5	156.7	140.4	84.6	51.3	31.2	23.2	18.0	15.4	8.43	4.43

CONSTANT POWER DISCHARGE CHARACTERISTICS UNIT: W (25°C)

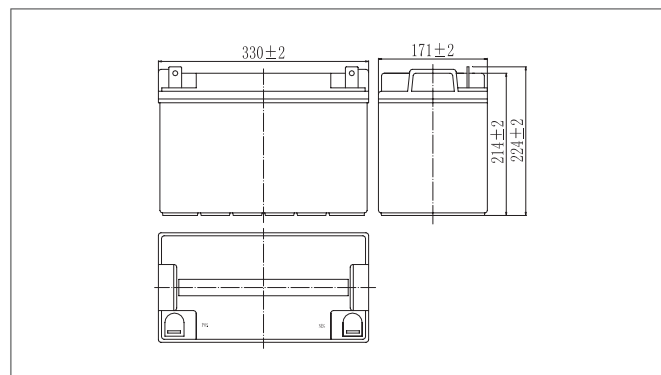
F.V/Time	5min	10min	15min	30min	60min	2h	3h	4h	5h	10h	20h
1.85V/cell	304.0	217.8	198.2	140.6	88.2	54.0	39.8	31.4	27.3	15.5	8.23
1.80V/cell	340.1	243.6	221.7	151.9	90.8	55.5	43.0	33.4	28.6	16.2	8.52
1.75V/cell	363.0	260.0	236.6	153.8	94.9	58.2	43.7	33.9	29.0	16.3	8.59
1.70V/cell	381.6	273.3	248.7	155.6	96.3	59.1	44.4	34.3	29.4	16.5	8.67
1.67V/cell	387.8	277.8	252.8	156.7	97.1	59.7	44.6	34.7	29.9	16.7	8.77

Note: The above characteristics data can be obtained within three charge/discharge cycles

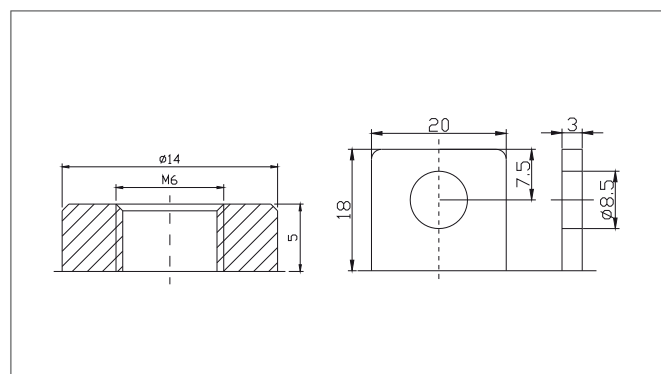
SPECIFICATIONS

Model	BB 100-12	
Nominal Voltage	12V	
Rated capacity (20 hour rate)	100Ah	
Dimensions	Length	330± 2mm(13.0inch)
	Width	173± 2mm(6.81inch)
	Height	212± 2mm(8.35inch)
	Total Height	220± 2mm(8.66inch)
Approx. Weight	27.8kg(61.2lbs)± 5%	

OUTER DIMENSIONS (MM)



TERMINAL TYPE (MM)



CHARACTERISTICS

Capacity (25 °C)	20HR(10.5V)	100Ah
	10HR(10.5V)	90Ah
	1HR(9.60V)	57.4Ah
Terminal type		T5/T9/T11
Internal resistance (Fully charged,25 °C)		Approx.5.5m Ω
Capacity affected by temperature (20HR)	40 °C	102%
	25 °C	100%
	0 °C	85%
	-15 °C	65%
Self-discharge (25 °C)	3 months	Remaining Capacity:91%
	6 months	Remaining Capacity:82%
	12 months	Remaining Capacity:65%
Nominal operating temperature		25°C± 3°C(77°F± 5°F)
Operating temperature range	Discharge	-15°C~50°C(5°F~122°F)
	Charge	-10°C~50°C(14°F~122°F)
	Storage	-20°C~50°C(-4°F~122°F)
Float charging voltage(25°C)		13.60 to 13.80V Temperature compensation: -18mV/°C
Cyclic charging voltage(25°C)		14.50 to 14.90V Temperature compensation: -30mV/°C
Maximum charging current		27.0A
Terminal material		Copper
Maximum discharge current		900A(5 sec.)
Designed floating life(20°C)		10 years

CONSTANT CURRENT DISCHARGE CHARACTERISTICS UNIT: A (25°C)

F.V/Time	5min	10min	15min	30min	60min	2h	3h	4h	5h	10h	20h
1.85V/cell	179.8	127.8	115.4	81.2	50.3	30.6	22.5	17.6	15.3	8.60	4.56
1.80V/cell	204.4	145.1	130.8	88.4	52.1	31.6	24.4	18.8	16.1	9.00	4.73
1.75V/cell	222.1	157.4	141.6	90.2	54.6	33.3	24.9	19.2	16.4	9.09	4.77
1.70V/cell	237.4	167.8	150.4	92.0	55.7	34.0	25.3	19.5	16.7	9.18	4.82
1.67V/cell	245.7	173.1	154.8	93.3	56.6	34.5	25.6	19.8	17.0	9.30	4.88

CONSTANT POWER DISCHARGE CHARACTERISTICS UNIT: W (25°C)

F.V/Time	5min	10min	15min	30min	60min	2h	3h	4h	5h	10h	20h
1.85V/cell	335.7	240.5	218.6	155.1	97.2	59.6	43.9	34.6	30.1	17.1	9.08
1.80V/cell	375.6	269.0	244.5	167.5	100.2	61.2	47.4	36.8	31.6	17.9	9.39
1.75V/cell	400.8	287.1	261.0	169.7	104.7	64.5	48.2	37.3	32.0	18.0	9.48
1.70V/cell	421.4	301.8	274.3	171.6	106.2	65.2	49.0	37.9	32.4	18.2	9.56
1.67V/cell	428.2	306.7	278.8	172.8	107.1	65.9	49.2	38.3	33.0	18.4	9.67

Note: The above characteristics data can be obtained within three charge/discharge cycles